



SINK & BASE ORGANIZERS



U-SHAPED TRAY ORGANIZER

- Available in 10" height
- Chrome-plated round wire
- Mounts to cabinet floor
- Easy 4-screw installation
- Use multiple to create custom storage space

PRODUCT #	DESCRIPTION	DIMENSIONS	FINISH	SLP
Chrome Wire U-Shaped Tray Organizer				
596-10CR-52	U-Shaped Tray Divider	3" (76 mm) W x 11-7/8" (302 mm) D x 10" (254 mm) H	Chrome	\$

GLIDEWARE™ PULLOUT

- Designed for 14" to 22" cabinet depths
- Solid wood construction, natural maple w/ up to (7) Nickel Chrome hooks
- Mounts to cabinet top and rear
- Full-extension, BLUM soft-close undermount slides
- US Patent No. 9,433,283 and 9,022,237
- TSCA Title VI compliant



PRODUCT #	DESCRIPTION	DIMENSIONS	CAB	FINISH	SLP
Glideware™ Pullout w/ BLUMOTION Soft-Close and (5 or 7) Long Hooks					
GLD-W22-BC-7	22" Glideware™	6" (152 mm) W x 22" (559 mm) D x 5-1/16" (129 mm) H	FHB18	Maple	\$
GLD-W22-BG-7	22" Glideware™	6" (152 mm) W x 22" (559 mm) D x 5-1/16" (129 mm) H	FHB18	Gray	\$



HEAVY DUTY MIXER LIFT

- Silver lift:
 - Designed for 18" face frame base cabinets
 - 1-1/2" thick Maple shelf
- Mounts to cabinet side
- Adjustable spring tension
- Built-in shock dampeners
- Holds appliances up to 60 lbs.
- TSCA Title VI compliant

PRODUCT #	DESCRIPTION	DIMENSIONS	FINISH	MCO	CAB	SLP
Heavy Duty Mixer Lift Kit w/ Soft-Close						
ML-MPHDSCCR-18	Mixer Lift Kit	15" (381 mm) W	Metallic Silver/Maple	15" (381 mm)	FFFHB18	\$



BASE CABINET PULLOUT W/ OXO® CONTAINERS

- Designed for 12" full height base cabinets
- Natural maple construction with semi-gloss finish
- Full-extension, BLUM soft-close undermount slides
- Patented mounting straps (US Patent No. 9,756,941)
- (7) BPA free OXO® Good Grips POP containers
 - (3) 4.3 qt.
 - (3) 1.7 qt.
 - (1) 2.6 qt.
- Adjustable rub bushings
- Patented door mount brackets provide 5" of adjustability and include micro-trim adjuster (US Patent No. 8,388,076)
- TSCA Title VI compliant



PRODUCT #	DESCRIPTION	DIMENSIONS	CAB	FINISH	SLP
Base Cabinet Pullout w/ OXO® Containers and BLUMOTION Soft-Close					
448OXO-BCSC-8C	Base Organizer	8-3/4" (222 mm) W x 21-5/8" (549 mm) D x 25-1/2 - 29-1/2" (648 - 749 mm) H	FHB12	Maple	\$

SINK & BASE ORGANIZERS



BLUM® SOFT-CLOSE BASE CABINET PULLOUT

- Designed for full height 12" drawer/door base cabinets
- Natural maple construction with semi-gloss finish
- Full-extension, BLUM soft-close undermount slides
- Patented mounting straps (US Patent No. 9,756,941)
- Adjustable shelves with chrome rails
- Adjustable rub bushings
- Patented door mount brackets provide 5" of adjustability and include micro-trim adjuster (US Patent No. 8,388,076)
- TSCA Title VI compliant

PRODUCT#	DESCRIPTION	DIMENSIONS	CAB	FINISH	SLP
Base Cabinet Pullout w/ BLUMOTION Soft-Close for Full Height					
448-BCSC-5C	Base Organizer	6" (152 mm) W x 21-5/8" (549 mm) D x 25-1/2 - 29-1/2" (648 - 749 mm) H	FHB9	Maple	\$
448-BCSC-8C	Base Organizer	8-3/4" (222 mm) W x 21-5/8" (549 mm) D x 25-1/2 - 29-1/2" (648 - 749 mm) H	FHB12	Maple	\$
448-BCSC-11C	Base Organizer	11-3/4" (298 mm) W x 21-5/8" (549 mm) D x 25-1/2 - 29-1/2" (648 - 749 mm) H	FHB15	Maple	\$
448-BCSC-14C	Base Organizer	14-3/4" (375 mm) W x 21-5/8" (549 mm) D x 25-1/2 - 29-1/2" (648 - 749 mm) H	FHB18	Maple	\$
Full Access Base Cabinet Pullout w/ BLUMOTION Soft-Close					
448-BCSC-6C	Base Organizer	7-1/4" (184 mm) W x 21-5/8" (549 mm) D x 25-1/2 - 29-1/2" (648 - 749 mm) H	FLFHB9	Maple	\$
448-BCSC-9C	Base Organizer	10-1/4" (260 mm) W x 21-5/8" (549 mm) D x 25-1/2 - 29-1/2" (648 - 749 mm) H	FLFHB12	Maple	\$

SPICE RACK INSERT FOR BASE CABINET PULLOUT

- Natural maple construction with a semi-gloss finish



PRODUCT #	DESCRIPTION	DIMENSIONS	FINISH	SLP
Solid Bottom Pullout Shelves w/ BLUMOTION Soft-Close for Full Access Cabinetry				
448-08SC-SRI-1	Spice Rack	7" (178 mm) W x 19-7/16" (494 mm) D x 4-27/32" (124 mm) H	Maple	\$



BASE CABINET PULLOUT W/ UTENSIL BINS

- Designed for 12" full height base cabinets
- Natural maple construction with semi-gloss finish
- Full-extension, BLUM soft-close undermount slides
- Patented mounting straps (US Patent No. 9,756,941)
- (3) 2 qt. stainless steel bins
- Adjustable shelves and rear wall for added stability
- Adjustable rub bushings that prevent side to side movement
- Patented door mount brackets provide 5" of adjustability and include micro-trim adjuster (US Patent No. 8,388,076)
- TSCA Title VI compliant

PRODUCT#	DESCRIPTION	DIMENSIONS	CAB	FINISH	SLP
Base Cabinet Pullout w/ (3) Utensil Bins and BLUMOTION Soft-Close					
448UT-BCSC-5C	Base Organizer	6" (152 mm) W x 21-5/8" (549 mm) D x 25-1/2 - 29-1/2" (648 - 749 mm) H	FHB9	Maple	\$
448UT-BCSC-8C	Base Organizer	8-3/4" (222 mm) W x 21-5/8" (549 mm) D x 25-1/2 - 29-1/2" (648 - 749 mm) H	FHB12	Maple	\$

BASE CABINET PULLOUT W/ KNIFE BLOCK & UTENSIL BINS

- Designed for 12" full height face frame base cabinets
- Natural maple construction with a semi-gloss finish
- Full-extension, BLUM soft-close undermount slides
- Patented mounting straps (US Patent No. 9,756,941)
- (1) 2 qt. bin
- Knife block features flex rod technology that adjusts to securely hold knives
- (4) flexible plastic cutting mats
- Adjustable rear wall
- Adjustable accessory shelf and lower static shelf with chrome rails
- Patented door mount brackets provide 5" of adjustability and include micro-trim adjuster (US Patent No. 8,388,076)
- TSCA Title VI compliant



PRODUCT#	DESCRIPTION	DIMENSIONS	CAB	FINISH	SLP
Base Cabinet Pullout w/ Knife Block and Utensil Bins w/ BLUMOTION Soft-Close					
448KB-BCSC-5C	Base Organizer w/ (1) Bin	6" (152 mm) W x 21-5/8" (549 mm) D x 25-1/2" (648 mm) H	FHB9	Maple	\$
448KB-BCSC-8C	Base Organizer w/ (1) Bin	8-3/4" (222 mm) W x 21-5/8" (549 mm) D x 25-1/2 - 29-1/2" (648 - 749 mm) H	FHB12	Maple	\$
448KB-BCSC-11C	Base Organizer w/ (4) Bins	11-3/4" (298 mm) W x 21-5/8" (549 mm) D x 25-1/2 - 29-1/2" (648 - 749 mm) H	FHB15	Maple	\$
Full Access Base Cabinet Pullout w/ Knife Block and Utensil Bins w/ BLUMOTION Soft-Close					
448KB-BCSC-9C	Base Organizer w/ (1) Bin	10-1/4" (260 mm) W x 21-5/8" (549 mm) D x 25-1/2 - 29-1/2" (648 - 749 mm) H	FLB12	Maple	\$

SINK & BASE ORGANIZERS



BASE CABINET PULLOUT TRAY DIVIDER/FOIL WRAP HOLDERW/ UTENSIL BINS

- Designed for 12" base cabinets
- Natural maple construction with semi-gloss finish
- Full-extension, BLUM soft-close undermount slides
- Patented mounting straps (US Patent No. 9,756,941)
- Removable center T-Bar divider for taller items
- Patented door mount brackets provide 5" of adjustability and include micro-trim adjuster (US Patent No. 8,388,076)
- TSCA Title VI compliant

PRODUCT#	DESCRIPTION	DIMENSIONS	CAB	FINISH	SLP
Base Cabinet Pullout Tray Divider/Foil Wrap Holder w/ BLUMOTION Soft-Close					
447-BCSC-5C	Base Cabinet Pullout	6" (152 mm) W x 21-21/32 - 21-5/8" (550 - 550 mm) D x 19-1/2" (495 mm) H	B9	Maple	\$
447-BCSC-8C	Base Cabinet Pullout	8-3/4" (222 mm) W x 21-21/32 - 21-5/8" (550 - 550 mm) D x 19-1/2" (495 mm) H	B12	Maple	\$



CHROME WIRE PULLOUT SHELVES

- Designed for 24" base cabinets
- Chrome-plated round wire frame ideal for organizing bulky items
- Easy 4-screw installation
- Door mount brackets available (sold separately)

PRODUCT #	DESCRIPTION	DIMENSIONS	MIN CABINET OPENING	FINISH	SLP
Chrome Wire Pullout Shelf					
5WB1-1218CR-1	Pullout Shelf	11-1/2" (292 mm) W x 18" (457 mm) D x 5-17/32" (141 mm) H	11-1/2" (292 mm)	Chrome	\$
5WB1-1522CR-1	Pullout Shelf	14-1/2" (368 mm) W x 22" (559 mm) D x 5-17/32" (141 mm) H	14-1/2" (368 mm)	Chrome	\$
5WB1-1822CR-1	Pullout Shelf	17-1/2" (444 mm) W x 22" (559 mm) D x 5-17/32" (141 mm) H	17-1/2" (445 mm)	Chrome	\$
5WB1-2122-CR-1	Pullout Shelf	20-1/2" (521 mm) W x 22" (559 mm) D x 5-17/32" (141 mm) H	20-1/2" (521 mm)	Chrome	\$
Two-Tier Chrome Wire Pullout Shelves					
5WB2-1222CR-1	Pullout Shelves	11-3/4" (298 mm) W x 22-1/4" (565 mm) D x 16-1/4 - 19" (413 - 483 mm) H	11-1/2" (292 mm)	Chrome	\$
5WB2-1522CR-1	Pullout Shelves	14-3/4" (375 mm) W x 22-1/4" (565 mm) D x 16-1/4 - 19" (413 - 483 mm) H	14-1/2" (368 mm)	Chrome	\$
5WB2-1822CR-1	Pullout Shelves	17-3/4" (451 mm) W x 22-1/4" (565 mm) D x 16-1/4 - 19" (413 - 483 mm) H	17-1/2" (445 mm)	Chrome	\$
5WB2-2122CR-1	Pullout Shelves	20-3/4" (527 mm) W x 22-1/4" (565 mm) D x 16-1/4 - 19" (413 - 483 mm) H	20-1/2" (521 mm)	Chrome	\$



DOOR MOUNT CUTTING BOARD

- Designed for 18" base cabinets
- Natural maple support rack with chrome-plated round wire
- Available with a mineral oil treated, maple hardwood cutting board
- Patented adjustable door mount brackets that provide up to 5" adjustability
(US Patent No. 7,204,569)
- TSCA Title VI compliant

PRODUCT #	DESCRIPTION	DIMENSIONS	FINISH	MCO	CAB	SLP
Natural Maple Door Mount Cutting Board						
4DMCB-15	Cutting Board	10-1/2" (267 mm) W x 2-7/8" (73 mm) D x 16-7/8" (429 mm) H	Maple	10-7/8" (305 mm) - FF 10-7/8" (305 mm) - FL	B15	\$
4DMCB-18	Cutting Board	13-1/2" (343 mm) W x 2-7/8" (73 mm) D x 16-7/8" (429 mm) H	Maple	13-7/8" (352 mm) - FF 13-7/8" (352 mm) - FL	B18	\$



TWO-TIER COOKWARE ORGANIZER

- Designed for 18" base cabinets
- Natural maple dovetail construction with semi-gloss finish
- Full-extension with 3/4" over-travel, undermount slides with BLUM MOVENTO soft-close
- Up to (220) pre-drilled peg holes
- (4) matching, press-in pegs
- Top shelf holds (1) lid organizer for 18"
- Mounts to cabinet floor
- TSCA Title VI compliant



PRODUCT #	DESCRIPTION	DIMENSIONS	FINISH	MCO	CAB	SLP
Wood Two-Tier Base Organizer Pullout						
4CW2-18SC-1	Cookware Organizer	14-1/2" (368 mm) W x 22-1/4" (565 mm) D x 18-7/8" (479 mm) H	Maple	14-1/2" (368 mm)	B18	\$
4CW2-24SC-1	Cookware Organizer	20-1/2" (521 mm) W x 22-1/4" (565 mm) D x 18-7/8" (479 mm) H	Maple	20-1/2" (521 mm)	B24	\$

SINK & BASE ORGANIZERS



DRAWER PULLOUT

- Designed for 24" base cabinets
- Veneer plywood dovetail construction
- 3/4 extension or full-extension BLUM soft-close undermount slides
- Tall drawers feature peg board bottoms with (2) maple pegs and (6) metal dividers
- TSCA Title VI compliant



PRODUCT #	DESCRIPTION	DIMENSIONS	FINISH	MCO	WHT PER CARTON	SLP
Drawer Pullout w/ BLUMOTION Soft-Close						
4WDB4-18SC-1	Standard Drawer	14-1/16" (357 mm) W x 21-5/8" (550 mm) D x 4-27/32" (123 mm) H	Maple	15" (381 mm)	B18	\$
4WDB4-24SC-1	Standard Drawer	20-1/16" (510 mm) W x 21-5/8" (550 mm) D x 4-27/32" (123 mm) H	Maple	21" (533 mm)	B24	\$
4WDB7-24SC-1	Tall Drawer with dividers	20-1/16" (510 mm) W x 21-5/8" (550 mm) D x 8" (203 mm) H	Maple	21" (533 mm)	B24	\$



CONTEMPORARY BASE CABINET PULLOUT W/ UTENSIL BINS

- Designed for 12" base cabinets
- Solid bottom shelves with orion gray flat wire and textured linen finish
- Full-extension, BLUM soft-close undermount slides
- (3) 1.25 qt. removable stainless steel bins
- Patented door mount brackets (US Patent No. 8,047,621)
- TSCA Title VI compliant



PRODUCT #	DESCRIPTION	DIMENSIONS	FINISH	CAB	SLP
Full Access Contemporary Base Cabinet Pullout w/ (3) Utensil Bins and BLUMOTION Soft-Close					
5322UT-BCSC-6-FOG	Base Organizer	7-1/4" (184 mm) W x 21-11/16" (551 mm) D x 24-1/4" (610 mm) H	Orion Gray	FLFHB9	\$
5322UT-BCSC-6-MP	Base Organizer	7-1/4" (184 mm) W x 21-11/16" (551 mm) D x 24-1/4" (610 mm) H	Maple	FLFHB9	\$
Face Frame Contemporary Base Cabinet Pullout w/ (3) Utensil Bins and BLUMOTION Soft-Close					
5322UT-BCSC-8-MP	Base Organizer	8-3/4" (221 mm) W x 21-11/16" (551 mm) D x 24-1/4" (610 mm) H	Maple	FFFHB12	\$



CONTEMPORARY BASE CABINET PULLOUT W/ KNIFE BLOCK & UTENSIL BIN

- Designed for 12" and 15" full access and face frame base cabinets
- Solid bottom shelves with chrome-plated round wire, gray
- Full-extension, BLUM soft-close undermount slides
- (1) 2 qt. or (2) 2 qt. and (2) 1.25 qt. removable stainless steel bins
- Patented door mount brackets (US Patent No. 8,047,621)
- Knife block features flex rod technology that adjusts to securely hold knives
- TSCA Title VI compliant



PRODUCT #	DESCRIPTION	DIMENSIONS	CAB	FINISH	SLP
Full Access Contemporary Base Cabinet Pullout w/ BLUMOTION Soft-Close					
5322KB-BCSC-6-*	Base Organizer w/ (1) Bins	7-1/4" (190 mm) W x 21-11/16" (551 mm) D x 24-1/4" (610 mm) H	FLFHB9	Gray/Maple	\$
5322KB-BCSC-9-*	Base Organizer w/ (1) Bin	10-1/4" (260 mm) W x 21-11/16" (551 mm) D x 24-1/4" (610 mm) H	FLFHB12	Gray/Maple	\$
Face Frame Contemporary Base Cabinet Pullout w/ BLUMOTION Soft-Close					
5322KB-BCSC-8-*	Base Organizer w/ (1) Bins	8-3/4" (222 mm) W x 21-11/16" (551 mm) D x 24-1/4" (610 mm) H	FFFHB12	Gray/Maple	\$
5322KB-BCSC-11-*	Base Organizer w/ (4) Bins	11-3/4" (298 mm) W x 21-11/16" (551 mm) D x 24-1/4" (610 mm) H	FFFHB15	Gray/Maple	\$

* GR for Gray, MP for Maple



CONTEMPORARY BASE CABINET PULLOUT

- Designed for 9" and 12" face frame base cabinets and 9" full access base cabinets
- Solid bottom shelves with chrome-plated round wire, gray or orion gray flat wire with textured linen finish
- Full-extension, BLUM soft-close undermount slides
- 5322-BCSC-8 mounts to cabinet floor
- Patented door mount brackets (US Patent No. 8,047,621)
- TSCA Title VI compliant



PRODUCT #	DESCRIPTION	DIMENSIONS	FINISH	CAB	SLP
Full Access Contemporary Base Cabinet Pullout w/ BLUMOTION Soft-Close					
5322-BCSC-6-FOG	Base Organizer	14-1/2" (368 mm) W x 22-1/4" (565 mm) D x 18-7/8" (479 mm) H	Orion Gray	FLFHB9	\$
Face Frame Contemporary Base Cabinet Pullout w/ BLUMOTION Soft-Close					
5322-BCSC-5-MP	Base Organizer	6" (127 mm) W x 22-1/8" (565 mm) D x 24-1/2" (622 mm) H	Maple	FFFHB9	\$
5322-BCSC-6-FOG	Base Organizer	6" (127 mm) W x 22-1/8" (565 mm) D x 24-1/2" (610 mm) H	Orion Gray	FFFHB9	\$
5322-BCSC-8-GR	Base Organizer	8-3/4" (222 mm) W x 21-11/16" (551 mm) D x 24-1/4" (610 mm) H	Gray	FFFHB12	\$
5322-BCSC-8-MP	Base Organizer	8-3/4" (222 mm) W x 21-11/16" (551 mm) D x 24-1/4" (610 mm) H	Maple	FFFHB12	\$

SINK & BASE ORGANIZERS



CHROME TRAY DIVIDER

- Available in 18" height
- Chrome-plated round wire
- Mounts to cabinet floor and rear wall
- Use multiple to create custom storage space

PRODUCT #	DESCRIPTION	PRODUCT DIMENSIONS	FINISH	SLP
Drawer Pullout w/ BLUMOTION Soft-Close				
LD-597-18CR-1	12" Chrome Tray Divider	1/4" (6 mm) W x 20" (508 mm) D x 12" (305 mm) H	Chrome	\$
LD-597-18CR-1	18" Chrome Tray Divider	1/4" (6 mm) W x 20" (508 mm) D x 18" (458 mm) H	Chrome	\$



PREMIER PULLOUT SHELF

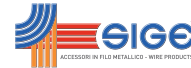
- Designed for 15", 18", 24" and 36" base cabinets
- Chrome-plated round wire
- Full-extension, under mount slides with soft-close
- Adjustable mounting brackets
- Door mount brackets included

PRODUCT #	DESCRIPTION	DIMENSIONS	CAB	FINISH	SLP
Full Access Contemporary Base Cabinet Pullout w/ BLUMOTION Soft-Close					
5730-12CR	Pullout Wire Shelf	11-1/2 - 13-21/32" (288 - 348 mm) W x 21-23-32" (556 mm) D x 5-9/32 - 5-19/32" (132 - 140 mm) H	B15	Chrome	\$
5730-15CR	Pullout Wire Shelf	14-1/2 - 16-21/32" (364 - 424 mm) W x 21-23-32" (556 mm) D x 5-9/32 - 5-19/32" (132 - 140 mm) H	B18	Chrome	\$
5730-21CR	Pullout Wire Shelf	20-1/2 - 22-21/32" (516 - 576 mm) W x 21-23-32" (556 mm) D x 5-9/32 - 5-19/32" (132 - 140 mm) H	B24	Chrome	\$
5730-33CR	Pullout Wire Shelf	32-1/2 - 34-23/32" (822 - 882 mm) W x 21-23-32" (556 mm) D x 5-9/32 - 5-19/32" (132 - 140 mm) H	B36	Chrome	\$
Accessories					
5789CR	Drop In Cookware Organizer	14-1/16" (357 mm) W x 9-1/2" (241 mm) D x 7-21/32" (195 mm) H		Chrome	\$



SOLID BOTTOM PULLOUT SHELF

- Designed for 36" base cabinets
- Solid bottom shelves with chrome-plated wire, gray or natural maple, or orion gray flat wire with satin solid bottom
- Full-extension, BLUM soft-close undermount slides
- Side and bottom mounting brackets
- Door mounting brackets included
- TSCA Title VI compliant



PRODUCT #	DESCRIPTION	DIMENSIONS	FINISH	MCO	CAB	SLP
Face Frame Solid Bottom Pullout Shelf w/ BLUMOTION Soft-Close						
5330-33BCSC-GR	Solid Bottom Shelf	32-11/16" (830 mm) W x 21-17/32" (547 mm) D x 5-1/16" (129 mm) H	Chrome	32-11/16" (830 mm)	FFB36	\$



WINE BASE CABINET ORGANIZER

- Designed for a 15" minimum cabinet opening
- Chrome-plated round wire
- Gas spring assist soft-open/soft-close
- Holds (20) wine bottles, 150 lb. capacity
- Universal for left or right handed cabinets

PRODUCT #	DESCRIPTION	DIMENSIONS	FINISH	MCO	CAB	SLP
Wine Base Organizer w/ Soft-Close						
5375-40WR-1CR	Wine Base Organizer	14-1/8" (359 mm) W x 17" (432 mm) D x 25-3/4" (654 mm) H	Chrome	15" (381 mm)	FHB18	\$

SINK & BASE ORGANIZERS



TWO-TIER COOKWARE ORGANIZER

- Designed for 24" base cabinets
- Chrome-plated wire frame
- Full-extension, ball-bearing slides, 100 lb. rated with soft-close
- Independently operating shelves that accommodate a variety of cookware sizes and brands
- Top tier organizes lids
- Bottom tier with adjustable dividers stores a variety of larger pots and pans
- Mounts to cabinet floor, side and rear wall
- US Patent No. D588,415
- U-shaped bracket for added support

PRODUCT #	DESCRIPTION	DIMENSIONS	FINISH	MCO	CAB	SLP
Drawer Pullout w/ BLUMOTION Soft-Close						
5CW2-2122SC-CR	Cookware Organizer	20-3/4" (527 mm) W x 22" (559 mm) D x 18-1/8" (460 mm) H	Chrome	21" (533 mm)	B24	\$

WASTE

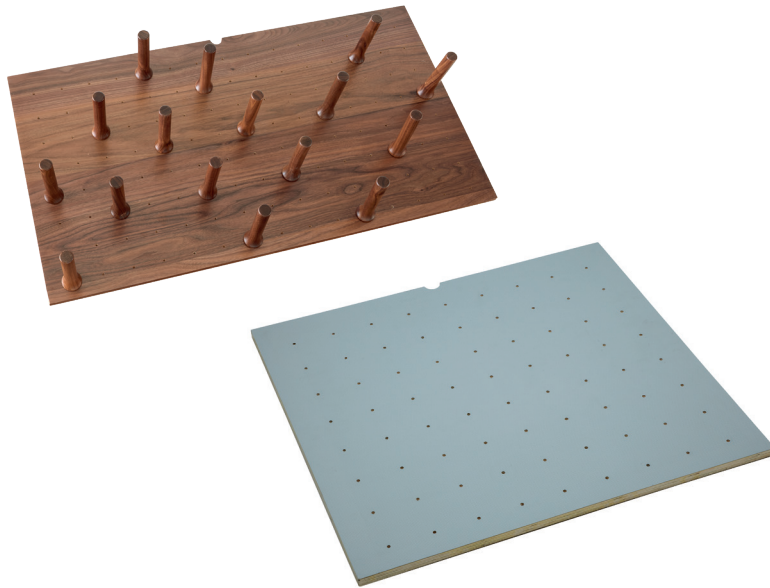


MAPLE BOTTOM MOUNT

- Designed for 24" base cabinets
- Double 30 qt. polymer containers, metallic silver
- Maple dovetail frame with semi-gloss finish
- Full-extension with 1-1/2" over-travel, ball-bearing, 150 lb. rated concealed slides
- Rear storage
- Mounts to cabinet door and floor
- Pre-assembled door mount brackets
- TSCA Title VI compliant

PRODUCT #	DESCRIPTION	DIMENSIONS	FINISH	MCO	CAB	SLP
Maple Bottom Mount Waste Container Pullouts w/ BLUMOTION Soft-Close						
4WC-24DM2-SC	Double 30 qt.	20-31/32" (533 mm) W x 22-1/4" (565 mm) D x 19-5/8" (498 mm) H	Silver/Maple	20-1/2" (521 mm) - FF 21" (533 mm) - FL	B24	\$

DRAWER



DRAWER PEG SYSTEM

- Designed for 42" or smaller base cabinet drawers
- Trim-to-fit existing drawer
- Drop-in installation
- Natural maple construction with semi-gloss finish, walnut construction with satin finish or natural maple construction with sound dampening vinyl covering
- Up to (120) pre-drilled peg holes
- (16) matching, press-in pegs (walnut only)
- Compatible with chrome accessories (sold separately)
- TSCA Title VI compliant

PRODUCT #	DESCRIPTION	DIMENSIONS	FINISH	SLP
Drawer Peg System				
4DPS-WN-2421	Peg System w/ (16) Pegs	39-1/4" (997 mm) W x 21-1/4" (540 mm) D x 6-5/8" (168 mm) H	Walnut	\$
4DPS-WN-3021	Peg System w/ (16) Pegs	39-1/4" (997 mm) W x 21-1/4" (540 mm) D x 6-5/8" (168 mm) H	Walnut	\$
4DPS-WN-3921	Peg System w/ (16) Pegs	39-1/4" (997 mm) W x 21-1/4" (540 mm) D x 6-5/8" (168 mm) H	Walnut	\$
4DPS-2421	Peg System w/ (9) Pegs	24-1/4" (616 mm) W x 21-1/4" (540 mm) D x 6-5/8" (168 mm) H	Maple	\$
4DPS-3021	Peg System w/ (12) Pegs	30-1/4" (768 mm) W x 21-1/4" (540 mm) D x 6-5/8" (168 mm) H	Maple	\$
4DPS-3921	Peg System w/ (16) Pegs	39-1/4" (997 mm) W x 21-1/4" (540 mm) D x 6-5/8" (168 mm) H	Maple	\$
Drawer Peg Board - No Pegs				
4DPBG-2421-1	Vinyl Drawer Peg Board	24-1/8" (613 mm) W x 21-1/4" (540 mm) D x 5/8" (16 mm) H	Vinyl	\$
4DPBG-3021-1	Vinyl Drawer Peg Board	30-1/8" (765 mm) W x 21-1/4" (540 mm) D x 5/8" (16 mm) H	Vinyl	\$
Accessories				
DPS/PEG-4SS	(4) Stainless Steel Pegs	1-1/4" (32 mm) W x 1-1/4" (32 mm) D x 6" (153 mm) H	Stainless Steel	\$
5DCH-2-1-CR	(2) Stainless Steel Containers	6-1/2" (165 mm) W x 10-1/4" (260 mm) D x 6-1/2" (165 mm) H	Stainless Steel	\$
5DLD-1-CR	Lid Organizer	5-1/4" (133 mm) W x 16-7/8" (429 mm) D x 5-3/8" (137 mm) H	Chrome	\$
5DCD-1-CR	Pot/Pan Organizer	7-3/4" (197 mm) W x 15-1/4" (387 mm) D x 7-5/8" (194 mm) H	Chrome	\$

DRAWER

WOOD CUTLERY TRAY INSERT



- Designed for 24" or smaller base cabinet drawers
- Trim-to-fit existing drawer
- Drop-in installation
- Walnut construction with satin finish
- Up to (9) compartments
- Shallow height
- TSCA Title VI compliant

PRODUCT #	DESCRIPTION	DIMENSIONS	FINISH	SLP
Shallow Wood Cutlery Tray Insert				
4WCT-WN-1SH	Shallow Height Cutlery Tray	15-1/8" (384 mm) W x 22" (559 mm) D x 2-3/8" (60 mm) H	Walnut	\$
4WCT-WN-3SH	Shallow Height Cutlery Tray	21-1/8" (537 mm) W x 22" (559 mm) D x 2-3/8" (60 mm) H	Walnut	\$
4WCT-1SH	Shallow Height Cutlery Tray	14-5/8" (371 mm) W x 22" (559 mm) D x 2-3/8" (60 mm) H	Maple	\$
4WCT-3SH	Shallow Height Cutlery Tray	20-5/8" (524 mm) W x 22" (559 mm) D x 2-3/8" (60 mm) H	Maple	\$

WALL ORGANIZERS



PULL-DOWN SHELF

- Designed for 36" wall cabinets
- Chrome-plated metal frame
- Wire bottom shelves with chrome wire accents
- Mounts to cabinet floor and side walls
- Side and bottom mount brackets
- Gas-assisted lifting/lowering mechanism
- Locks into down position for hands-free accessibility
- Pulls down 13-1/2" and out 16-3/4"
- TSCA Title VI compliant

PRODUCT #	DESCRIPTION	DIMENSIONS	FINISH	MCOFL	MCOFF	CAB	SLP
Two-Tier Chrome Wire Pullout Shelves							
5PD-24CRN	Pull-Down	34-1/4" (870 mm) W x 10-1/8" (267 mm) D x 18-3/8" (467 mm) H	Silver/Chrome	22-1/2" (572 mm)	21" (534 mm)	W24	\$
5PD-36CRN	Pull-Down	34-1/4" (870 mm) W x 10-1/8" (267 mm) D x 18-3/8" (467 mm) H	Silver/Chrome	34-1/2" (876 mm)	33" (838 mm)	W36	\$



DOOR MOUNT SPICE RACK

- Designed for 15" wall cabinets
- Adjustable door mounting brackets with 4" of adjustability
- Screw-in clips (565 only)
- White powder-coated wire or orion gray flat wire construction
- 4-screw installation
- (4) shelves w/ wire accents
- Shelves are 2-15/32" D
- Holds items up to 2-1/4" D
- Mounts to cabinet door

PRODUCT #	DESCRIPTION	DIMENSIONS	FINISH	MCO	CAB	SLP
Flat Wire Door Mount Spice Rack						
5365-10-FOG	Spice Rack	7-27/32" (200 mm) W x 2-15/32" (63 mm) D x 23-11/32" (593 mm) H	Orion Gray	9" (229 mm) - FF 9" (229 mm) - FL	FLW12	\$



WINE & STEMWARE RACK

- Available in single 18" rack
- Heavy gauge wire construction
- Hidden mounting
- Easy installation
- Available in chrome

PRODUCT #	DESCRIPTION	DIMENSIONS	FINISH	SLP
Wine and Stemware Rack				
3150-11*	11" Stemware Rack	4-1/4" (108 mm) W x 11" (279 mm) D x 1-1/2" (38 mm) H	Chrome	\$
3150-16*	16" Stemware Rack	4-1/4" (108 mm) W x 16" (406 mm) D x 1-1/2" (38 mm) H	Chrome	\$
3150-18*	18" Stemware Rack	4-1/4" (108 mm) W x 18" (457 mm) D x 1-1/2" (38 mm) H	Chrome	\$

* CR for Chrome, ORB for Oil Rubbed Bronze

BLIND CORNER



WIRE BOTTOM BLIND CORNER OPTIMIZER

- Designed for 15" or 18" blind corner cabinet openings
- Two-tier wire frame
- (4) wire bottom shelves with round wire accents
- Full-extension, ball-bearing, 100 lb. rated slides
- Universal mounting, non-handed
- Mounts to cabinet floor
- 15 lb. capacity per shelf
- Soft-close available (sold separately)

PRODUCT #	DESCRIPTION	DIMENSIONS	FINISH	MCO	CAB	SLP
Two-Tier Wire Bottom Blind Corner Optimizer - Non-Handed w/Soft-Close						
5PSP-15SC-CR	Two-Tier Blind Corner Optimizer	26-1/4" (667 mm) W x 20-1/4" (514 mm) D x 21" (533 mm) H	Chrome	15" (381 mm)	BC42	\$
5PSP-18SC-CR	Two-Tier Blind Corner Optimizer	32-1/4" (819 mm) W x 20-1/4" (514 mm) D x 21" (533 mm) H	Chrome	18" (457 mm)	BC45	\$

SINK ORGANIZERS



U-SHAPED WIRE BOTTOM SHELVES

- Designed for 33" or 36" sink base cabinets
- U-shaped chrome wire bottom shelves
- Full-extension, ball-bearing slides with soft-close
- Mounts to cabinet floor or side walls
- Pre-assembled door mount brackets
- Side and bottom mount brackets
- Fits around plumbing

PRODUCT #	DESCRIPTION	DIMENSIONS	FINISH	MCO	CAB	SLP
U-Shaped Wire Bottom Shelf w/ Ball-Bearing Soft-Close						
5786-30CR	Wire Bottom Shelf	29-3/8 - 31-3/4" (749 - 806 mm) W x 21-3/4" (556 mm) D x 5-5/16" (140 mm) H	Chrome	29-3/8" (746 mm) - FF 29-3/8" (746 mm) - FL	SB33	\$
5786-33CR	Wire Bottom Shelf	32-3/8 - 34-3/4" (826 - 883 mm) W x 21-3/4" (556 mm) D x 5-5/16" (140 mm) H	Chrome	32-3/8" (822 mm) - FF 32-3/8" (822 mm) - FL	SB36	\$



TOWEL HOLDERS

- Designed for base or sink base cabinets
- Wire construction, powder-coated white or chrome-plated
- Full-extension friction slide or 3/4 extension, ball-bearing, 25 lb. rated slide
- Universal mounting, non-handed
- Mounts to cabinet side walls
- Holds up to (2) or (3) dish towels

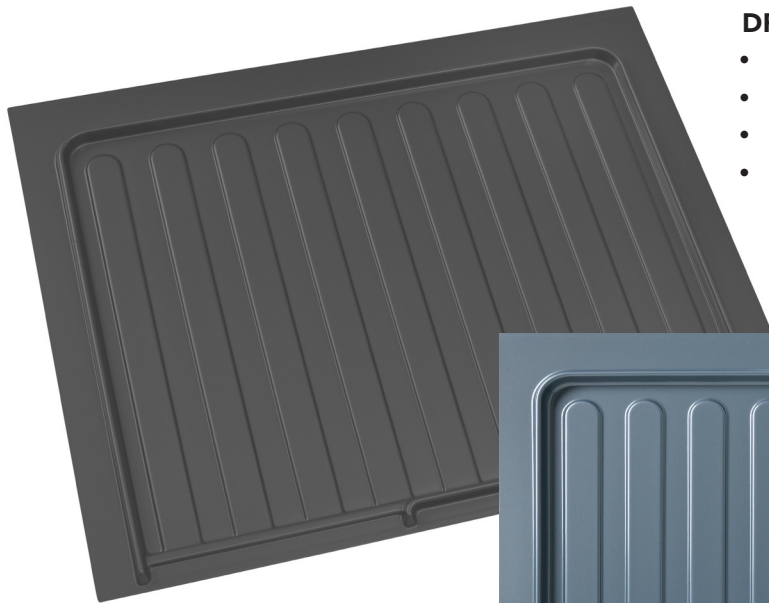
PRODUCT #	DESCRIPTION	DIMENSIONS	FINISH	MCOFL	CAB	SLP
Pullout Towel Holder w/ Friction Slide						
563-47C	3-Prong Towel Holder	5" (127 mm) W x 17-3/4" (451 mm) D x 1-1/4" (32 mm) H	Chrome	6" (152 mm)	SB30	\$



TWO-TIER SINK BASE ORGANIZER

- Designed for 30" sink base cabinets
- Chrome-plated wire L-shaped frame
- Mounts to cabinet side walls
- Universal mounting, non-handed hardware
- Fits around plumbing

PRODUCT #	DESCRIPTION	DIMENSIONS	FINISH	MCO	CAB	SLP
Wine and Stemware Rack						
548-10CR-1	Sink Base Organizer	9-3/4" (248 mm) W x 16" (406 mm) D x 18" (457 mm) H	Chrome	10" (254 mm)	SB30	\$



DRIP TRAYS

- Designed for installation in new 36" sink base cabinet construction
- Can be cut down to fit a 33" cabinet
- Protects the bottom of your cabinet from spills
- Funnels excessive water out of the front of your cabinet

PRODUCT #	DESCRIPTION	DIMENSIONS	MINIMUM TRIM	FINISH	SLP
Drip Trays					
SBDT-2730-OG-1	Drip Tray	28-1/2" (724 mm) W x 23-1/4" (591 mm) D x 3/4" (19 mm) H	25-1/2" (648 mm) x 21-1/2" (546 mm)	Orion Gray	\$
SBDT-2730-S-1	Drip Tray	28-1/2" (724 mm) W x 23-1/4" (591 mm) D x 3/4" (19 mm) H	25-1/2" (648 mm) x 21-1/2" (546 mm)	Metallic Silver	\$
SBDT-3336-OG-1	Drip Tray	34-1/2" (876 mm) W x 23-1/4" (591 mm) D x 3/4" (19 mm) H	31-1/2" (800 mm) x 21-1/2" (546 mm)	Orion Gray	\$
SBDT-3336-S-1	Drip Tray	34-1/2" (876 mm) W x 23-1/4" (591 mm) D x 3/4" (19 mm) H	31-1/2" (800 mm) x 21-1/2" (546 mm)	Metallic Silver	\$
SBDT-3942-OG-1	Drip Tray	40-1/2" (1029 mm) W x 23-1/4" (591 mm) D x 3/4" (19 mm) H	37-1/2" (953 mm) x 21-1/2" (546 mm)	Orion Gray	\$
SBDT-3942-S-1	Drip Tray	40-1/2" (1029 mm) W x 23-1/4" (591 mm) D x 3/4" (19 mm) H	37-1/2" (953 mm) x 21-1/2" (546 mm)	Metallic Silver	\$

TALL ORGANIZERS



WIRE PANTRY PULLOUT

- Available in (2) widths and (2) height ranges for 24" deep cabinetry
- Full-extension, 250 lb. rated slides with soft-close
- Adjustable door mount brackets
- Kit packaged with frame, baskets and hardware

PRODUCT #	DESCRIPTION	DIMENSIONS	MCO	CAB	SLP
Wire Pantry Pullout w/ Soft-Close — (6) Shelves/ (4) Door Mount Brackets					
5773-04-CR-1	Pantry Pullout	4-1/2" (114 mm) W x 21-11/16" (551 mm) D x 73-5/8 - 80-3/4" (1870 - 2051 mm) H	4-1/2" (114 mm)	T9	\$
5773-08-CR-1	Pantry Pullout	8-1/4" (210 mm) W x 21-11/16" (551 mm) D x 73-5/8 - 80-3/4" (1870 - 2051 mm) H	8-1/2" (216 mm)	T12	\$
5773-10-CR-1	Pantry Pullout	10-1/4" (260 mm) W x 21-11/16" (551 mm) D x 73-5/8 - 80-3/4" (1870 - 2051 mm) H	10-1/2" (268 mm)	T15	\$
5773-14-CR-1	Pantry Pullout	14-1/4" (362 mm) W x 21-11/16" (551 mm) D x 73-5/8 - 80-3/4" (1870 - 2051 mm) H	14-7/8" (378 mm)	T18	\$
5773-16-CR-1	Pantry Pullout	16-1/4" (413 mm) W x 21-11/16" (551 mm) D x 73-5/8 - 80-3/4" (1870 - 2051 mm) H	16-1/2" (419 mm)	T21	\$



SOLID BOTTOM PANTRY PULLOUT

- Available in (5) widths and (4) height ranges for full access 24" deep cabinetry
- Gray solid bottom shelves
- Full-extension slides with soft-close, 250 lb. rated
- Micro-adjustment door mounting brackets
- Kit packaged with frame, baskets and hardware
- TSCA Title VI compliant

PRODUCT #	DESCRIPTION	DIMENSIONS	MCO	CAB	SLP
Solid Bottom Pantry Pullout w/ Soft-Close — (6) Shelves/ (4) Door Mount Brackets					
5373-08-GR	Pantry Pullout	8-1/4" (210 mm) W x 21-11/16" (550 mm) D x 73-5/8" — 80-3/4" (1870 mm - 2051 mm) H	8-1/2" (216 mm)	T12	\$
5373-10-GR	Pantry Pullout	10-1/4" (260 mm) W x 21-11/16" (550 mm) D x 73-5/8" — 80-3/4" (1870 mm - 2051 mm) H	10-1/2" (267 mm)	FLT12	\$
5373-13-GR	Pantry Pullout	13-1/4" (337 mm) W x 21-11/16" (550 mm) D x 73-5/8" — 80-3/4" (1870 mm - 2051 mm) H	13-1/2" (343 mm)	FLT15	\$
5373-16-GR	Pantry Pullout	16-1/4" (413 mm) W x 21-11/16" (550 mm) D x 73-5/8" — 80-3/4" (1870 mm - 2051 mm) H	16-1/2" (419 mm)	FLT18	\$
5373-19-GR	Pantry Pullout	19-1/4" (489 mm) W x 21-11/16" (550 mm) D x 73-5/8" — 80-3/4" (1870 mm - 2051 mm) H	16-1/2" (419 mm)	FLT21	\$

